

# Jharkhand Plastic Park

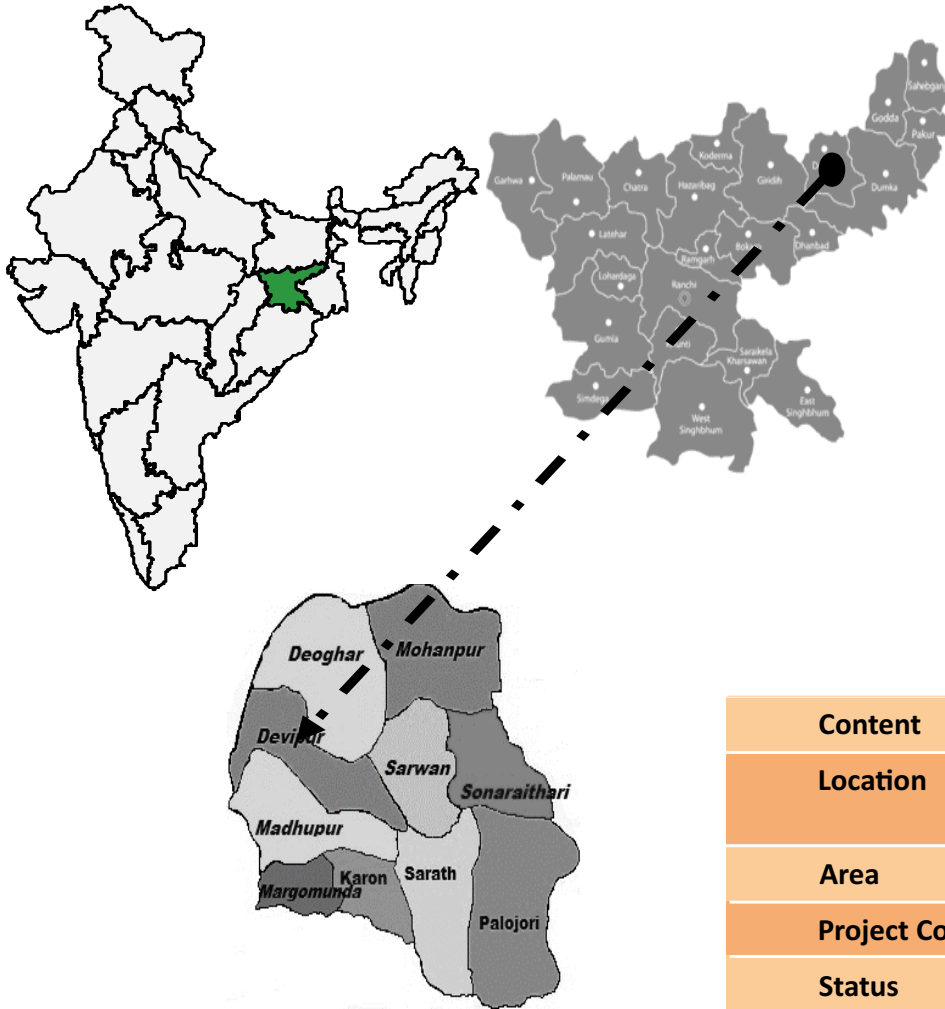
Devipur Industrial Area,  
Deoghar, Jharkhand



**Registered Office:**

Jharkhand Industrial Infrastructure  
Development Corporation (JIIDCO)  
3rd Floor, RIADA building,  
Namkum Industrial Area,  
Ranchi - 834010, Jharkhand

# Project Highlights



Located in AKIC corridor **2**

Readily Available Market **4**

World renowned Auto hub **6**

**1** Encumbrance Free Land

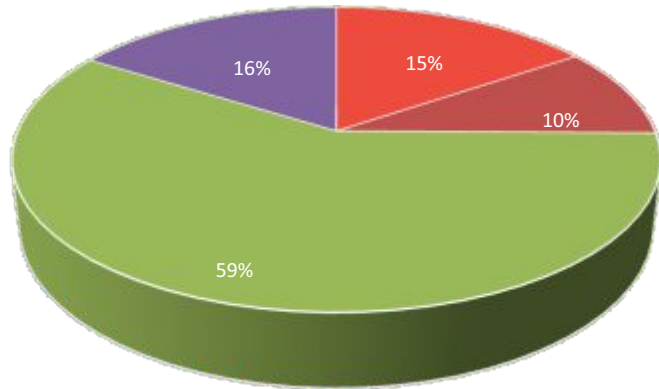
**3** Ease of Available Skilled Resource

**5** Attractive incentives under Industrial Policy

Content	Description
Location	Ramsagar & Shankarpur village, Devipur Tehsil, Deoghar District, Jharkhand
Area	~93.09 acres
Project Cost	INR 81.53 Cr
Status	In-principle approval accorded by Department of Chemicals & Petro Chemicals, Awaiting for Final Approval
Connectivity	National Highway: 4 Kms ; Railway stations: ~35 Kms Airport: 40 Kms ; Sea Port: 435 Kms

# Opportunities for Plastic Industries in Jharkhand

**Total Market Size of different Plastic Products in Jharkhand in Percentage in FY17- 18 (in MT)**



■ Injection Moulding    ■ Blow Moulding  
■ Extrusion Moulding    ■ Roto Moulding



Jharkhand's Per capita consumption of plastics is less than 3.1 kg Vs the national average 11 kg.



Jharkhand produces less than 22% of its domestic consumption.



More than 150 years legacy of Industrialization.

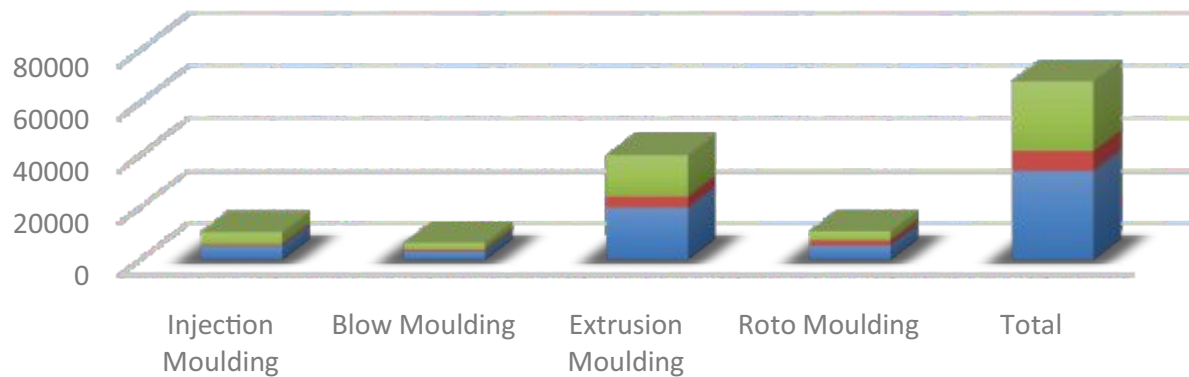


Availability of skilled and unskilled manpower in plastic and polymer space



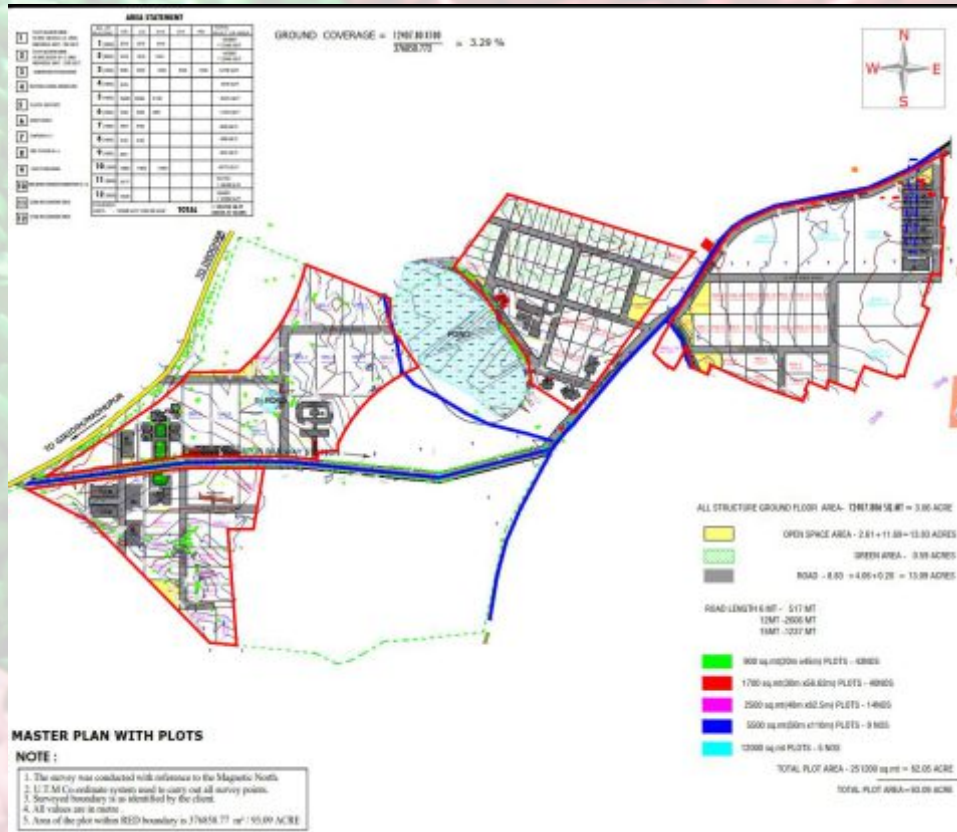
Availability of land for plastic & polymer industries at a very reasonable rate

**Jharkhand Market Size Vs Prodn. and Gap**



■ Total Market Size in FY17-19 (in MT)    ■ Production in Jharkhand (MT)    ■ GAP (in MT)

# Plastic Park - Project Layout



## Project Components

S.No	Components	Area (Acres)	% of Area
1	Roads	13.09	14.00%
2	Utility Infrastructure & Common Amenities	3.05	3.00%
3	Industrial Plots	62.06	67.00%
4	Open Spaces/ Landscaping	14.89	16.00%
<b>Total</b>		<b>93.09</b>	<b>100.00%</b>

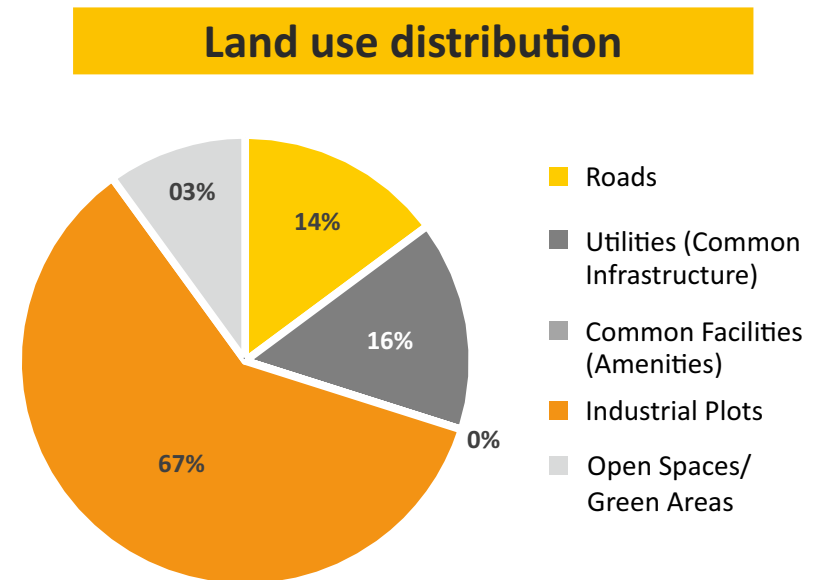
## Industrial Plots

S. No	Type	No.	Area (Sq Mt)	Area (acres)
1	Micro & Mini	83	97340.00	24.00
2	Small	14	23600.00	6.00
3	Medium	09	30200.00	7.00
4	Large	05	37800.00	9.00
<b>Total</b>		<b>111</b>	<b>188940.00</b>	<b>46.00</b>

# Component Detailing & Land Area Distribution

Sl. No	Infrastructure	Proposed Components
1	Support Services/ Common Amenities	<ul style="list-style-type: none"> <li>Administration &amp; Park Management offices</li> <li>Service Providers' offices</li> <li>Investor services' centre</li> <li>APPSEC-CIPET centre for testing &amp; training</li> <li>Design &amp; product sampling facilities</li> <li>Trade &amp; Display facilities</li> <li>Warehousing facilities/ Raw material depot</li> <li>Packaging Unit</li> <li>Crèche, first-aid Centre, Bank</li> <li>Kitchen and dining facilities</li> </ul>
2	Social Infrastructure	<ul style="list-style-type: none"> <li>Housing for managers, executives</li> <li>Dormitories for Workers</li> </ul>
3	Building for Production Activities	<ul style="list-style-type: none"> <li>Factory Buildings for Production</li> </ul>
4	Physical/ Utility Infrastructure	<ul style="list-style-type: none"> <li>Road network &amp; Storm Water Drainage</li> <li>Footpaths &amp; Utility Corridors</li> <li>Domestic &amp; Industrial Water Supply System</li> <li>Sewerage Collection System</li> <li>Sewerage Treatment Plant</li> <li>Solid waste Management &amp; Plastic Waste Recycling</li> <li>Street Lighting System</li> <li>Electrical Distribution System</li> <li>Telecommunications</li> </ul>

Land use Distribution			
S. No	Components	Area (Acres)	% of Area
1	Roads	13.09	14.00%
2	Utilities (Common Infrastructure) Common Facilities (Amenities)	3.05	3.00%
3	Industrial Plots	62.06	67.00%
4	Open Spaces/ Green Areas	14.89	16.00%
<b>Total</b>		<b>93.09</b>	<b>100.0%</b>



# Jharkhand Industrial and Investment Promotion Policy 2016

SI. No.	Incentives	Coverage	Applicability
1	Comprehensive Project Investment Subsidy (CPIS)	20%	Investments made in MSME fixed capital investment (with cap up-to Rs 2 Cr).
		20%	Investments made in non-MSME fixed capital investment (with cap upto Rs 20 Cr).
2	Stamp duty and Registration fee exemption	100%	Exemption / reimbursement of stamp duty and registration fee
3	Quality Registration Assistance	50%	Quality certification expenditure incurred up to maximum of Rs. 10.00 lakh.
4	Patent Registration Assistance	50%	Financial assistance of 50% of the expenditure incurred, up to a maximum of Rs. 10 lakh, per patent.
5	GST Incentives	80%	<b>New MSME units:</b> Reimbursement of SGST paid on intrastate sales, for the period of five years from the date of production
		75%	<b>New Large Units:</b> Reimbursement of SGST paid on Intrastate sales, for the period of seven years from the date of production
		75%	<b>New Mega Units:</b> Reimbursement of SGST paid on Intrastate sales, for the period of nine years from the date of production
		75%	<b>New Ultra Mega Units:</b> Reimbursement of SGST paid on Intrastate sales, for the period of Twelve years from the date of production
6	Interest Subsidy	5%	For New MSME & Non MSME units on total loan for 5 years Rs 10 lakhs for Micro Enterprises (i) Rs 20 Lakhs for Small Enterprises; (ii) Rs 40 Lakhs for Medium Enterprises (iii) Rs 1 Cr for non-MSME sector units

## Opportunities for Plastic Industries in Jharkhand

### PLASTIC PIPES

- ❖ PVC Pipes, CPVC Pipes Systems, Injection Moulded PVC fittings Polypropylene Random Copolymer pipes and fittings
- ❖ HDPE Pipe Systems, Inspection Chambers and manholes.
- ❖ Bath fittings, Roto moulded Tanks and Fittings

### CONSUMER PRODUCTS

- ❖ Furniture, Housewares

### PACKAGING PRODUCTS

- ❖ Flexible packaging film products
- ❖ Protective Packaging Products
- ❖ Cross Laminated Film products

### INDUSTRIAL PRODUCTS

- ❖ For automobiles: Moulded parts, such as dashboards and other interior and exterior parts
- ❖ Plastic body for consumer-durable products
- ❖ Material handling products, such as pallets, crates and bins.





### Single Window

[www.advantage.jharkhand.gov.in](http://www.advantage.jharkhand.gov.in)

Helpline: 0651-6556666

#### Contact details

Mr. K. Ravi Kumar, IAS,  
Secretary,  
Department of Industries  
2<sup>nd</sup> Floor, MDI Building, Dhurwa  
Ranchi, Jharkhand - 834004  
Phone: 0651-2446633  
Fax: 0651-2491587  
e-mail: [secind@rediffmail.com](mailto:secind@rediffmail.com)  
[sec-ind-jhr@nic.in](mailto:sec-ind-jhr@nic.in)

#### Contact details

Mr. Kripa Nand Jha, IAS  
Managing Director  
Jharkhand Industrial Infrastructure  
Development Corporation Ltd  
3<sup>rd</sup> Floor, RIADA Building  
Namkum, Ranchi, Jharkhand - 834010  
Phone: 0651-2491844  
Fax: 0651-2491884  
e-mail: [jhr-doi@nic.in](mailto:jhr-doi@nic.in)