








FINANCIAL INCENTIVES

	Basic Investment Promotion Assistance (BIPA)	<ul style="list-style-type: none"> • Ranges between 40% and 10% for investments in Eligible Fixed Capital Investment (EFCI)
	Multipliers to BIPA	<ul style="list-style-type: none"> • Employment Multiple: 1.0 to 1.5x BIPA for 100 to 2,500 employees • Export Multiple: 1.0 to 1.3X of BIPA for Exports starting from 25% • FDI Multiple: 1.1 to 1.2X of BIPA based on FDI equity from 26% to 50%
	Green Industrialization Assistance	<ul style="list-style-type: none"> • 50% reimbursement up to ₹5 Crore for Waste Management Systems. • 50% reimbursement up to ₹10 Crores for Zero Liquid Discharge (ZLD) systems
	IPR and Organic Certification	<ul style="list-style-type: none"> • 100% reimbursement up to ₹10 Lakh for IPR. • 100% reimbursement up to ₹5 Lakh for obtaining organic certifications.
	Employment & Skill Development Assistance	<ul style="list-style-type: none"> • 100% skill development assistance, EPF/ESI support, Reimbursement of insurance premiums
	Export Freight Subsidy	<ul style="list-style-type: none"> • 50% for transportation costs, up to ₹40 Lakh per unit per year, maximum up to ₹2 Crores, for 5 years
	Transfer of Technology to FDI units	<ul style="list-style-type: none"> • 50% up to ₹1 Crore for International Technology Transfer to vendor
	Additional Incentives for Plastic Toy Manufacturing	<ul style="list-style-type: none"> • 5% interest subsidy on term loan taken for Plant & Machinery for 7 years, maximum up to ₹50 Crore, from date of commercial production. • 100% Reimbursement: Units who take land on lease in industrial areas established by the State Government will be reimbursed the stamp duty and registration fee charged on lease land • Power Tariff reimbursement of ₹1/unit shall be given to the units in this sector for a period of 5 years. • Employment Generation Assistance up to ₹5,000 per month per employee for 5 years • One time reimbursement of skill development and training expenses of ₹13,000 per new employee shall be provided for 5 years for MP Domicile employee • 50% concession in the development charge levied by MPIDC

Customized Package available for investment above 250 crores and above 75 crores for Plastic Toy Industries

CONTACT US

EXECUTIVE DIRECTOR

MP INDUSTRIAL DEVELOPMENT CORPORATION LTD. (MPIDC),
RO GWALIOR &

MANAGING DIRECTOR

MP PLASTIC CITY DEVELOPMENT CORPORATION GWALIOR
LTD.(MPCDC)

Anisha Shrivastava, IAS

Email: ed.rogwl@mpidc.co.in

MANAGER

MP INDUSTRIAL DEVELOPMENT
CORPORATION LTD. (MPIDC), RO GWALIOR

Pragya Rajpoot

Mobile: 9981801422



MPIDC
MP INDUSTRIAL DEVELOPMENT
CORPORATION LTD.



INVEST
MADHYA PRADESH
— INFINITE POSSIBILITIES —

PLASTIC PARK BILLOWA GWALIOR



Plastic Park, Billowa



376300 Sqm

Gol funded Plastic Park

Developed under the umbrella scheme of the Department of chemicals and Petrochemicals

Strategic Advantage



Nearest Town
Gwalior – 27km



Highway & corridor
Delhi Nagpur Industrial Corridor :
NH 44 – 6.5 Km



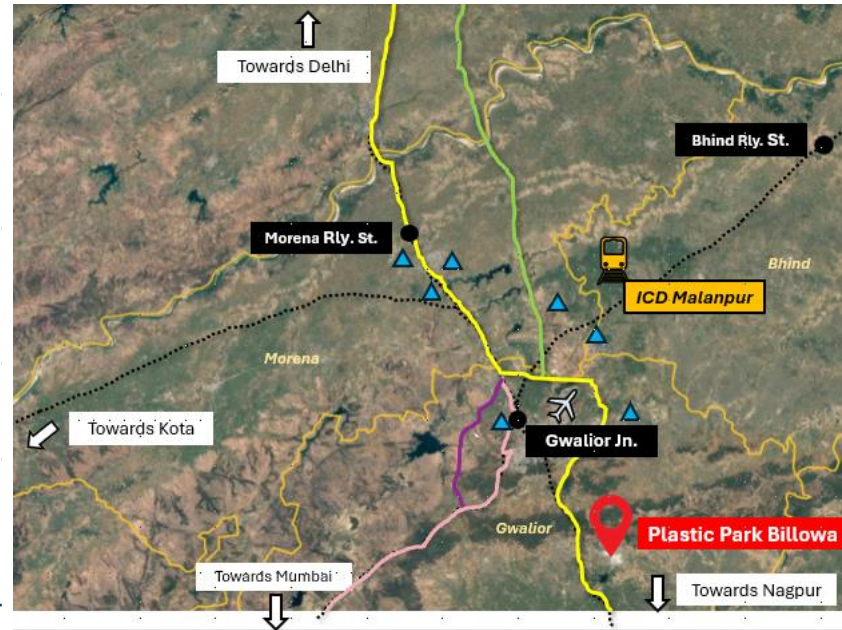
Nearest Railway station
Gwalior station – 27 km
Antri station – 10 km



Inland Container Depot
ICD Malanpur – 50 km



Nearest Airport
Rajmata Vijayaraje Scindia
Airport - 40 km



1

Robust Industrial Infrastructure

- 24*7 Uninterrupted Power Supply
- Abundant water supply
- Sewage and Water Treatment Facility
- Common Testing & Recycling Facilities/Administrative Complex
- Warehousing unit with packaging facility
- Parking Facility & Cafeteria

Salient Features

2

Assured Skilled Human Capital

- Central Institute of Petrochemicals Engineering & Technology (CIPET)
- Presence of premier institutes – ITM, IITM, IIITM, MITS etc.
- Over 90 Govt. & Private ITIs

3

Easy access to raw material

- Upcoming 1.2 MMTPA Petrochemical Complex at Bina will supply raw materials.
- Upcoming GAIL's Ethane Cracking Unit at Sehore will ensure continuous feedstock availability.

4

Industrial Ecosystem

- Presence of leading plastic manufacturers in Gwalior/Chambal region.
- Proximity to major industrial hubs like Malanpur, Banmore, and Gwalior, ensuring strong supply demand chain linkages.

Industrial Strength: Leading Plastic Manufacturers in Gwalior Region

Supreme
SUPREME INDUSTRIES LIMITED

VECTUS

wavin

PRAKASH SURYA
Steel Tubes & Pipes

MONTAGE
Innovation Beyond Imagination
MONTAGE ENTERPRISES PRIVATE LIMITED

LAYOUT PLAN

Plastic Park Billowa

For booking of plot, please visit
[Home | Land Management System](#)

